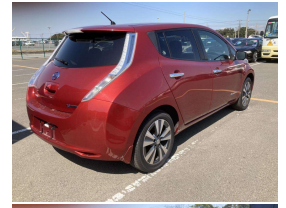


2016 Nissan LEAF 30X Thanks Edition



Why should you call Drive EV?



Drive EV Battery & High Voltage System Warranty

What is covered?

The battery pack and high voltage system are covered for 8 years or 100,000 km, whichever comes first. This warranty is provided by the manufacturer, Nissan North America, Inc. (NNA).

What is not covered?

This warranty does not cover damage to the battery pack or high voltage system caused by misuse, accidents, or other events outside of normal use. It also does not cover the cost of replacement of individual cells or modules.

How to claim:

Contact your Drive EV dealer or call 07 378 0082 for more information.



VEHICLE INFORMATION

Cash Price

Includes GST,
Registration &
Licensing

\$22,990

Finance this vehicle
from only

\$138.03

per week*

Total Amount Payable

\$28,711.24



New Zealand's Finance Company

Gain peace of mind
with Mechanical
Breakdown Insurance.
Ask us how.

Body

5 door, Hatchback

Odometer

58,050 km

Engine

0 cc, Electric

Fuel Type

Electric

Transmission

Auto

Wheels

-

VIN

-

Reg No.

-

Ext Colour

Magnetic Red

History

Ex-Overseas

Seats

5 seats

Interior

Black

Audio

-

Stock ID

9420

Exterior Features

- » 100% Electric
- » 130kms highway range
- » 150kms round town range
- » 360 Degree parking camera
- » CHAdeMO
- » LED Headlights
- » Rear Camera

Interior Features

- » Air Bag(s)
- » BOSE Sound System
- » Climate Control
- » Digital Display
- » English converted head unit
- » English speedo cluster
- » Heated Seats
- » MP3 Input

Mechanical Features

- » Cruise Control
- » ESP



Drive EV, Phone 07 3780082, Email steve@driveev.co.nz
60 Tuwharetoa Street, Taupo 3330, New Zealand
www.driveev.co.nz

* Finance calculation based on a 48 month term, no deposit and with an example annual fixed interest rate of 9.95%. Actual interest rate may be higher or lower. Includes an establishment fee of \$419.00 and a monthly maintenance fee of \$5.00. Full term total amount payable of \$28,711.24. Estimate only, not an offer of finance. Terms, conditions and lending criteria apply.