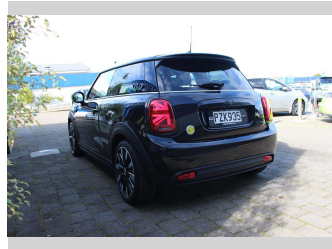



2021 Mini Hatch COOPER SE 135KW/EV



Purchase Price **\$34,990**
Includes GST, Registration & Licensing

Indicative repayments
\$208.20 per week*
Based on a 48 month term & no deposit.
Total repayments (208) = **\$43,306.26**



Gain peace of mind with
Mechanical Breakdown Insurance. Ask us how.

- Top features**
- » 100% Electric
 - » 11kW Type 2 AC Charging...
 - » 135kW Motor
 - » 180kms highway range
 - » 230 kms round town ran...
 - » 5 Star safety rating
 - » 50kW DC Fast Charging
 - » 6.6kW Type 2 AC chargi...
 - » Active Battery Cooling
 - » Adaptive Cruise Contro...
 - » Blind spot monitoring
 - » CCS
 - » Climate Control
 - » Daytime LED runing lig...
 - » Digital Display
 - » GPS/Sat Nav
 - » Heads up display HUD
 - » Heated Seats & Steerin...

Body Style
3 door, Hatchback

Odometer
12,500 km

Engine
0 cc, Electric

Fuel Type
Electric

Transmission
Auto, Front Wheel

Wheels
-

VIN
WMW12DJ0802R21470

Interior
Grey

Safety



Based on 2023 VSRR rating

Reg No.
PZK935

Ext Colour
Black

History
NZ New, 1 owner

Seats
4 seats

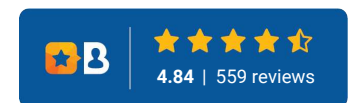
CO2 Emissions
★★★★☆
0 grams/km

Energy Economy
★★★★☆
Annual fuel cost of \$1,730

Cost per year is an estimate based on electricity price of \$0.27 per kWh and an average distance of 14000 km. Includes Road User Charges (RUC). Emissions and Energy Economy figures standardised to 3P WLTP.
Stock ID: 9915



Drive EV | Phone 07 3780082 | Email steve@driveev.co.nz
60 Tuwharetoa Street, Taupo 3330, New Zealand
www.driveev.co.nz



* Drive EV is not a lender nor a financial adviser. Any amounts displayed should not be seen as an offer of finance or taken as financial advice. The interest rate, fees and loan term used in this calculation may not actually represent those available from lenders. Actual interest rates, fees and loan terms will vary per lender and are typically based on an assessment of your credit risk and responsible lending criteria. Any repayment amounts displayed are indicative only and have been calculated using several other indicative inputs. The interest rate used in this calculation is an arbitrary 9.95%, however exact interest rates vary per lender. The term of the loan used in this calculation is 48 month. Exact terms available vary per lender although options typically include 6, 12, 18, 24, 36, 48 and 60 months. This calculation also includes two typical mandatory fees charged by lenders. These are an account admin fee of \$5.00 per month (other payment frequencies may be available) and a one-off establishment fee of \$419.00. Typically, this fee can be paid upfront or, as in this calculation, be capitalised over the contract term, ie. included in the loan amount. These fees can vary per lender and other non-mandatory fees and charges may also apply. The total amount of repayments has been calculated by multiplying 208 weekly repayments (based on a 48 month term) by the weekly repayment amount of \$208.20 which equals \$43,306.26. This calculator does not consider any of your own personal circumstances and we strongly suggest you seek budgeting advice prior to committing to any loan contract. Responsible lending criteria and lender terms and conditions will likely apply to any finalised loan contract. Proof of security and/or vehicle insurance may also be required before proceeding.