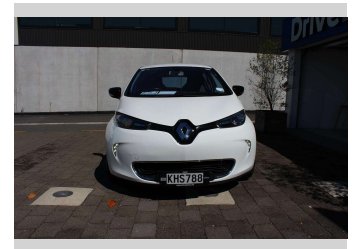
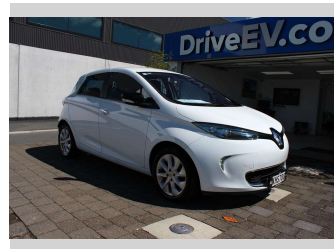



2016 Renault Zoe Dynamique NAV ZE40 41kWh



Purchase Price **\$17,990**
Includes GST, Registration & Licensing

Indicative repayments
\$108.80 per week*
Based on a 48 month term & no deposit.
Total repayments (208) = **\$22,629.98**



Gain peace of mind with
Mechanical Breakdown Insurance. Ask us how.

Top features

- » 100% Electric
- » 230kms Highway range
- » 270kms round town rang...
- » 5 Star safety rating
- » Central Locking
- » Child seat anchor poin...
- » Climate Control
- » Daytime LED runing lig...
- » Digital Display
- » GPS/Sat Nav
- » LED Headlights
- » LED rear tail lights
- » Rear Camera
- » Type 2 22kW on board c...

Body Style
5 door, Hatchback

Odometer
32,859 km

Engine
1 cc, Electric


Fuel Type
Electric

Transmission
Auto, Front Wheel

Wheels
-

VIN
VF1AGVYA052421560

Interior
-

Safety

Based on 2023 VSRR rating

Reg No.
KHS788

Ext Colour
White

History
Ex-Overseas, 2 owners

Seats
5 seats


CO2 Emissions
★★★★★ ☆
0 grams/km

Energy Economy
★★★★★ ☆
Annual fuel cost not available

Cost per year is an estimate based on electricity price of \$0.27 per kWh and an average distance of 14000 km. Includes Road User Charges (RUC). Emissions and Energy Economy figures standardised to 3P WLTP.
Stock ID: 9887



Drive EV | Phone 07 3780082 | Email steve@driveev.co.nz
60 Tuwharetoa Street, Taupo 3330, New Zealand
www.driveev.co.nz



★★★★★
4.84 | 553 reviews

* Drive EV is not a lender nor a financial adviser. Any amounts displayed should not be seen as an offer of finance or taken as financial advice. The interest rate, fees and loan term used in this calculation may not actually represent those available from lenders. Actual interest rates, fees and loan terms will vary per lender and are typically based on an assessment of your credit risk and responsible lending criteria. Any repayment amounts displayed are indicative only and have been calculated using several other indicative inputs. The interest rate used in this calculation is an arbitrary 9.95%, however exact interest rates vary per lender. The term of the loan used in this calculation is 48 month. Exact terms available vary per lender although options typically include 6, 12, 18, 24, 36, 48 and 60 months. This calculation also includes two typical mandatory fees charged by lenders. These are an account admin fee of \$5.00 per month (other payment frequencies may be available) and a one-off establishment fee of \$419.00. Typically, this fee can be paid upfront or, as in this calculation, be capitalised over the contract term, ie. included in the loan amount. These fees can vary per lender and other non-mandatory fees and charges may also apply. The total amount of repayments has been calculated by multiplying 208 weekly repayments (based on a 48 month term) by the weekly repayment amount of \$108.80 which equals \$22,629.98. This calculator does not consider any of your own personal circumstances and we strongly suggest you seek budgeting advice prior to committing to any loan contract. Responsible lending criteria and lender terms and conditions will likely apply to any finalised loan contract. Proof of security and/or vehicle insurance may also be required before proceeding.